

Article

Effect of Plasma Nitriding on Fatigue Behavior of Ti-6Al-4V Alloy

Michele C. B. de Castro¹, Antônio A. Couto^{1,2}, Gisele F. C. Almeida^{1,2,*}, Marcos Massi², Nelson B. de Lima¹, Argemiro da Silva Sobrinho³, Mariano Castagnet¹, Gleicy L. Xavier¹ and Rene R. Oliveira¹

¹ Instituto de Pesquisas Energéticas e Nucleares, São Paulo, Brazil

² Universidade Presbiteriana Mackenzie – São Paulo, Brazil

³ Instituto Tecnológico de Aeronáutica—ITA/DCTA, São José dos Campos, Brazil.

* Correspondence: gisele_fab@hotmail.com; Tel.: +55-11-99639-8967

Abstract: The Ti-6Al-4V alloy is widely used in the manufacture of components that should have low density, high corrosion resistance, and fatigue strength. The fatigue strength can be improved by surface modification. The aim of this study was to determine the influence of plasma nitriding on the fatigue behavior of Ti-6Al-4V alloy with a lamellar microstructure (Widmanstätten type). Nitriding was executed at 720 °C for 4 hours in an atmosphere with N₂, Ar and H₂. Samples microstructure characterization was carried out by X-ray diffraction analysis, optical microscopy and scanning electron microscopy. The average roughness of the specimens was determined, and fatigue tests were executed in a bending-rotating machine with reverse tension cycles (R= -1). X-ray diffraction analysis revealed the matrix phases α and β , and the phases ϵ -Ti₂N and δ -TiN in the nitrided alloy. A nitrogen diffusion layer was formed between the substrate and the titanium nitrides. Plasma nitriding resulted in an increase in low cycle fatigue strength, whereas at high cycles, both conditions exhibit similar behavior. The fracture surface of the fatigue tested specimens clearly revealed the lamellar microstructure. The fracture mechanism appears to be due to cracking at the interface of α and β phases of the lamellar microstructure.

Keywords: Ti-6Al-4V alloy; plasma nitriding; fatigue

1. Introduction

Titanium and its alloys are widely used in many areas such as the aerospace, food, naval and nuclear industries as well as the material to produce surgical implants. Among the various titanium alloys, Ti-6Al-4V is the most widely used as it has properties such as ease of manufacture, excellent corrosion resistance, biocompatibility, and low density. There are certain disadvantages related to the use of this alloy what include low surface hardness, low fatigue strength, low wear properties and high friction coefficient [1–5]. Fatigue failure of the Ti-6Al-4V alloy occurs when cyclic stresses are applied to it and the stress levels at which this failure occurs are below the yield stress of the alloy, which is usually determined from tensile tests [6]. This type of failure hinders the use of this alloy in applications requiring high fatigue strength [7].

Many surface modification techniques can be used to improve the fatigue properties of this alloy. Among these, the more widely used techniques are heat treatments, coating the surface with films and thermo-chemical treatments [8]. Nitriding is a thermo-chemical treatment and it can be done using gas, laser or plasma and the last is more efficient because it favors formation of a titanium solid solution with interstitial elements such as nitrogen [8]. Conventional gas nitriding was the preferred technique for a long time. This technique has some disadvantages such as poor surface finish, long duration of the process and insufficient control over formation of phases. Presently, plasma nitriding is used because it is cheaper, can be done on parts with varied geometries, provides excellent control over formation of phases and does not require long process

times to render satisfactory results. One disadvantage of plasma nitriding is the formation of cathode arcs that could damage the surface of the alloy during treatment [8,9].

Nitriding is done by diffusing nitrogen from the surface into the α phase in the alloy matrix. The diffusion process results in a gradual decrease in nitrogen content and hardness from the surface into the alloy. The outermost layer formed during nitriding consists of TiN with a face-centered cubic (FCC) structure. Just below this layer, the Ti₂N phase with a tetragonal structure forms. Below these two layers forms a layer of alpha phase titanium (Ti- α) rich in diffused nitrogen [3,5,8]. Formation of the TiN and Ti₂N phases on the Ti-6Al-4V alloy surface increases surface hardness and creates compressive stresses in the surface, that delays the crack nucleation stage and thereby increases the fatigue life of the alloy [10,11].

Plasma nitriding can be affected by many factors and the main ones are the duration of nitriding, temperature and gas composition in the nitriding atmosphere. A number of studies have been carried out to compare the thickness of nitride layers as a function of process time and temperature, and further, the effect of nitride layer thickness on improvements in fatigue properties. According to Rahman et al [12], in their studies on plasma nitriding, the improvement in fatigue properties was marked when the treatment was done at 500 °C for 6 hours in a nitriding atmosphere containing nitrogen and hydrogen in the proportion 3:1. Rodriguez et al [10] carried out nitriding at 850 °C and 900 °C for 1 to 4 hours and reported that the nitride layer had a positive effect on the fatigue properties, and this was caused by the compressive residual stress in the alloy, delaying thus the crack nucleation step. According to Farokhzadeh et al [1], plasma nitriding carried out at 600 °C and 900 °C for 24 hours revealed a 23 % improvement in fatigue strength of the Ti-6Al-4V alloy nitrided at 600 °C, compared to a non-nitrided alloy.

In view of these observations, the objective of this study was to evaluate the fatigue behavior of Ti-6Al-4V alloy before and after plasma nitriding. The starting Ti-6Al-4V alloy had a Widmanstätten type microstructure. After the plasma nitriding, the nitride layers were studied and fatigue tests were carried out in a bending-rotating machine.

2. Materials and Methods

In this study, a Ti-6Al-4V alloy with composition conforming to ASTM F136-13 [13] standard was used. The alloy was acquired in the form of annealed rods 12.7 mm in diameter and 3140 mm long. Specimens for the fatigue and the tensile tests were machined from the Ti-6Al-4V rods as per ASTM E8-11 [14] standard. The specimens used for the fatigue and the tensile tests were heat treated to obtain a Widmanstätten type microstructure. The heat treatment was carried out at 1050 °C for 30 minutes in an argon atmosphere. The heating rate was 20 °C/min and the specimens were subsequently cooled at 6 °C/min.

The heat-treated specimens were ultrasonically cleaned in a mixture of water with a surfactant, and then cleaned in isopropyl alcohol for more than 15 minutes before plasma nitriding. Plasma nitriding was carried out in a mixed gas flux containing N₂, Ar and H₂ in the proportion 5:5:1. Table 1 shows the average process parameters that were used along with their standard deviations.

Table 1. Average and standard deviations of parameters used in plasma nitriding.

Temperature (°C)	Pressure (Pa)	Current (A)	Voltage (V)	Power (W)
730 ± 3	586.62	2.65 ± 0.04	416 ± 1	1102 ± 24

Microstructure characterization of as non-nitrided and nitrided Ti-6Al-4V alloy samples was carried out using optical microscopy, scanning electron microscopy and X-ray diffraction analysis. Initially, 5 mm thick cross-sectional samples were cut from the rods. These samples were mounted and ground sequentially with SiC papers of 280, 400, 600 and 1200 mesh. Subsequently, the samples were polished with colloidal silicon containing 0.04 μ m particles. The etchant used to reveal the microstructure was a solution of 10 mL hydrofluoric acid (HF) and 2.5 mL nitric acid (HNO₃) for 3 seconds. The etched samples were examined in an Olympus BX60 optical microscope. The non-nitrided and nitrided samples were also studied by X-ray diffraction analysis using Cu α

($\lambda=0.1542$ nm). The specimens were scanned at angles between 20° to 80° and scan rate of 2° min^{-1} . Evaluation of the X-ray diffractograms was done with the software Crystallographica Search-Match.

Surface roughness of the non-nitrided and nitrided samples was determined. This was done with a Mitutoyo roughness measuring device. In these measurements, a sample cutoff length of 0.08 mm was used, as per ISO 4287:1997 [15] standard. Five random measurements were carried out on every sample and then the averages as well as the standard deviations of the measured values were determined. The roughness parameter used was Arithmetic Roughness (Ra). The tensile tests were carried out as per ASTM E8-11 [14] standard in a universal mechanical testing machine Instron 4400R with the crosshead speed of 1 mm/min.

The fatigue tests were carried out in a bending-rotating machine with reverse tension cycles. Therefore, in the fatigue tests on untreated and nitrided specimens, a loading ratio of $R=-1$ and rotation velocity of 3000 rpm were used. At least 3 specimens in each condition (non-nitrided and nitrided) were tested at each applied stress cycle. The fatigue tests were started at stress cycles equal to 60% of the yield stress. In subsequent tests, the stresses were lowered till it reached a point at which the specimen did not fail even after about 107 cycles. The stress versus number of cycles (S-N) curves were plotted from the medium values of the fatigue test results. The fracture surfaces of the specimens that failed in the fatigue tests were examined in a Philips XL-30 scanning electron microscope.

3. Results and Discussions

Figure 1(a) shows the equiaxial type microstructure of the Ti-6Al-4V alloy in the as-received state (annealed at $800^\circ\text{C}/2$ h). The matrix consists of uniformly distributed α phase grains (light regions) and β phase grains (dark regions). Figure 1(b) shows the microstructure of the alloy after heat treatment at $1050^\circ\text{C}/30$ min. In this micrograph, a Widmanstätten type microstructure can be observed with α and β phases in the lamellas form.

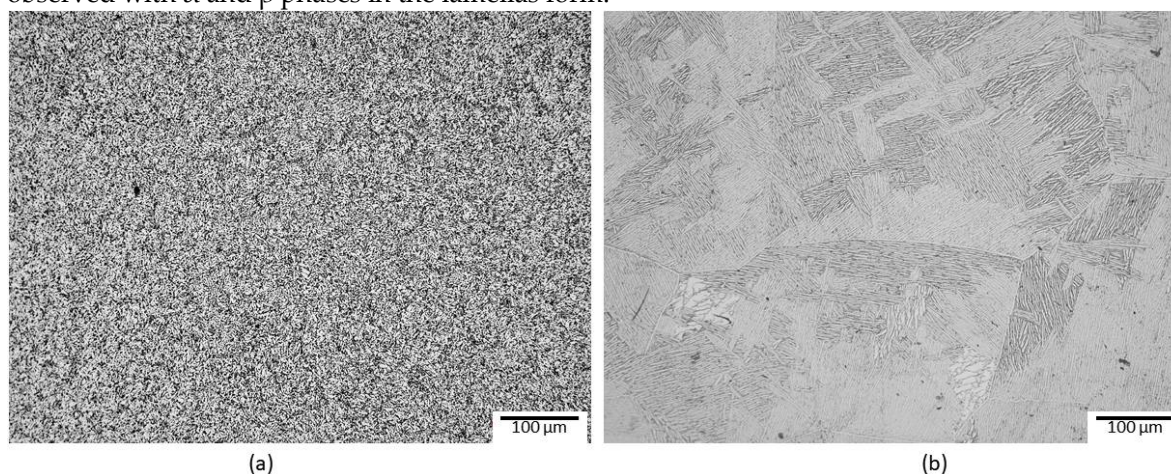


Figure 1. The Ti-6Al-4V alloy in the as-received annealed condition with equiaxial microstructure (a) and after heat treatment to obtain the Widmanstätten type microstructure (b).

In the scanning electron micrograph shown in figure 2, the 2 stages of formation of the nitride layer can be observed. The first stage forms by the interaction between the alloy and the active particles in the nitriding atmosphere and the second stage forms by diffusion of nitrogen atoms into the bulk of the Ti-6Al-4V alloy [3]. Nitriding of this alloy results in two layers. The first layer close to the surface consists of titanium nitrides (Ti_2N and TiN) and right below this layer, a region in which nitrogen atoms have diffused in the α phase of the Ti-6Al-4V alloy. Below these two layers, the matrix with a Widmanstätten type microstructure can be observed. It is also possible to observe that the layers have varying thicknesses, which makes it difficult to measure the thicknesses of the layers. Nevertheless, the thickness of the nitride layer was $3.77 \pm 1.46 \mu\text{m}$ and that of the diffuse layer, $10.37 \pm 2.58 \mu\text{m}$.

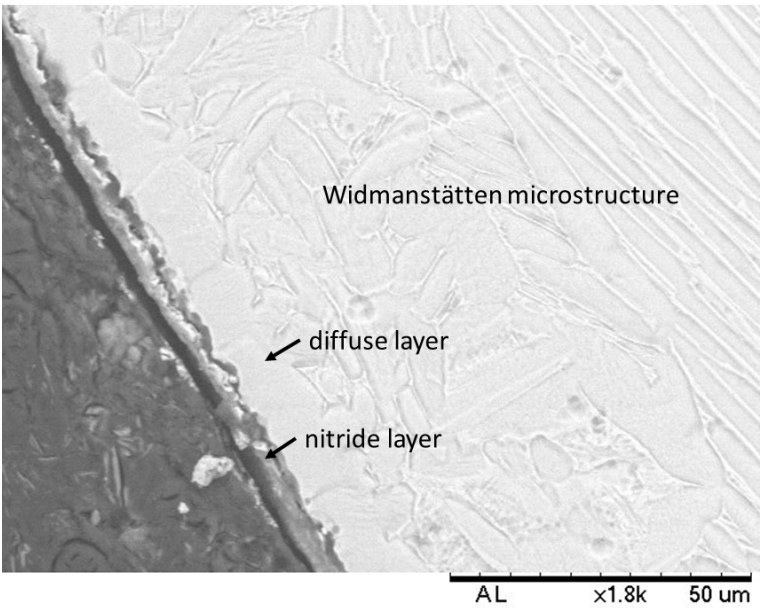


Figure 2. Scanning electron micrograph of Ti-6Al-4V alloy after plasma nitriding. The arrows indicate the titanium nitride layer and the nitrogen diffusion layer in the matrix.

Zimmer et al [16] reported that the nitride layer could have thicknesses varying from 1 to 50 μm and that the diffuse layer could attain thicknesses of hundreds of micrometers. According to Yildiz et al [3], the nitride layer thickness was up to 2 μm , when the alloy was plasma nitrided at an average temperature of 700 $^{\circ}\text{C}$. As per the studies of Farokhzadeh et al [1], on samples nitrided at 600 $^{\circ}\text{C}$, the thickness of the nitride and diffuse layers were 2 and 44 μm respectively. In samples nitrided at 900 $^{\circ}\text{C}$, the thicknesses of the nitride and diffuse layers were 5.8 and 19 μm respectively. Rahman et al [12] reported that the thickness of the nitride layer was 3 μm when the alloy was nitrided at 700 $^{\circ}\text{C}$ and 9 μm when nitrided at 900 $^{\circ}\text{C}$.

The thicknesses of the nitride layers in this study are coherent with those reported by other authors [1,3,8,12]. The thicknesses of the layers in nitrided samples are mainly influenced by the plasma nitriding process parameters like temperature, duration, and atmosphere among others, and primarily, temperature [8]. Increase in process temperature increases the nitrogen diffusion rate and this increases thicknesses of the two layers [12]. Rodriguez et al [10] reported that the influence of the layers formed upon plasma nitriding could be beneficial for the alloy, because the residual stress on the surface delays cracks nucleation, increasing thus the fatigue strength of the alloy.

The arithmetic surface roughness of the non-nitrided specimens was $0.38 \pm 0.13 \mu\text{m}$ and that of the nitrided specimens $0.62 \pm 0.12 \mu\text{m}$. Plasma nitriding increases significantly the roughness of the specimens (more than 50%). This result was foreseen and is due to ion bombardment of the alloy surface during plasma nitriding. Rahman et al [12] and Yildiz et al [3] reported that ion bombardment of the alloy leads to an increase of the surface roughness. Higher the temperature and duration of plasma nitriding, higher is the extent of the bombardment of the surface and consequently, higher the roughness. Roughness, like hardness and layer thicknesses, increases with increase in temperature and duration of treatment [1,3,12].

The X-ray diffraction results of the non-nitrided and nitrided Ti-6Al-4V alloy are shown in figure 3. In the non-nitrided alloy, only two phases could be identified: α phase (JCPDS 44-1294) with hexagonal close-packed (HCP) structure and the β phase (JCPDS 44-1288) with body-centered cubic (BCC) structure, and these observations are in agreement with other authors [2,3]. In the untreated alloy, three peaks corresponding to reflections from the planes (110), (200) and (211) of the β phase can be observed. However, two of these are coincident with peaks corresponding to reflections from the planes (002) and (103) of the α phase. The only peak of the β phase that does not coincide with peaks of the α phase is the peak corresponding to the reflection from the plane (200), but with low relative intensity. The β phase peak with the highest intensity is that related to the plane (110) and this coincides with the reflection from the plane (002) of the α phase. The coincidence

of peaks makes it difficult to identify the β phase in Ti alloys using only X-ray diffraction when the α phase is also present [17].

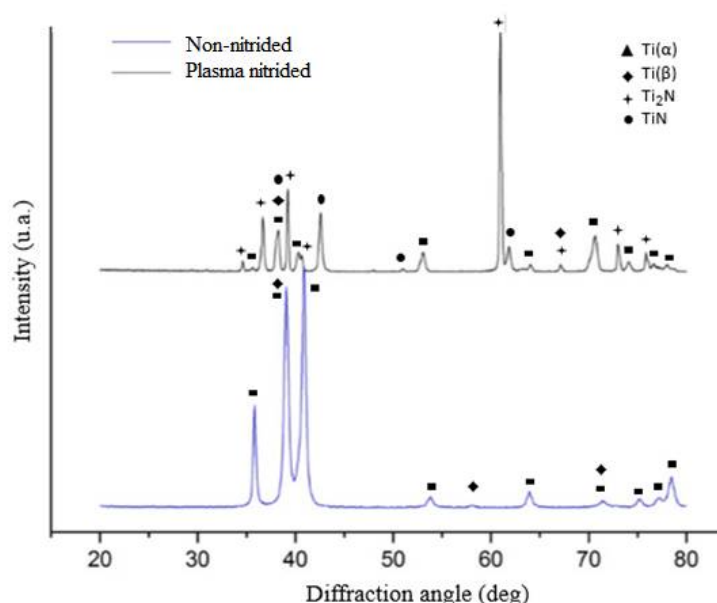


Figure 3. X-ray diffraction of the non-nitrided and nitrided Ti-6Al-4V alloy. Top: plasma nitrided alloy. Bottom: non-nitrided alloy.

X-ray diffraction analysis of the nitrided alloy (figure 3) revealed the phases: δ -TiN (JCPDS 38-1420) with face-centered cubic (FCC) structure and ϵ -Ti₂N (JCPDS 17-0386) with tetragonal structure, besides the α and β phases that were seen in the untreated specimen. These observations are in agreement with previous studies [2,3,8,10]. Some peaks of α and β phases disappeared due to the lower thickness of the substrate (Ti-6Al-4V alloy) analyzed when compared to the layer thicknesses of the nitrides formed. Alteration in the position of the diffraction peaks of the α phase was also noted. This was due to the dissolution of nitrogen to form an interstitial solid solution, and it caused the crystal lattice of the α phase to expand. Similar observations were reported previously [2,3]. Yetim et al [2] and Yildiz et al [3] also observed that the peak intensity of the Ti₂N phase decreased with the increase in plasma nitriding time and with the increase in temperature. Depending on the thickness of the nitride layer, these peaks tended to disappear. This is caused by the increase in diffusion rate of nitrogen in the α phase, resulting in a thicker diffuse layer and formation of only the TiN phase on the surface. In general, Ti₂N is the main phase formed in low temperature nitriding and TiN in high temperature nitriding [2].

Tensile tests were carried out on untreated specimens and their yield stress (σ_e), ultimate tensile stress (σ_{max}) and elongation were determined. These tensile tests were carried out to aid in determination of the parameters for the fatigue tests. The yield stress, ultimate tensile stress and elongation were 1017.56 ± 7.92 MPa, 1076.36 ± 8.56 MPa and $16.64 \pm 0.47\%$, respectively. These results are similar to those reported in other studies [1,5,12].

Figure 4 shows the graph S-N of the non-nitrided and plasma-nitrided Ti-6Al-4V alloy. At relatively high stress amplitudes (low cycle fatigue region) this graph showed that the nitrided specimens failed after a specific number of cycles. Overall, in low amplitude stress tests (high cycle fatigue region) no failures occurred until interruption of the tests after 107 cycles (run-out). In general, it can be observed that the nitrided specimens withstood a higher number of cycles than the non-nitrided specimens before failure at higher stress amplitudes and number of cycles lower than 105 cycles. In similar fatigue studies, the same behavior was also observed by Zuo et al [7]. In spite of the higher stress, the nitrided specimens withstood a higher number of cycles to failure. At low stresses, the behavior of nitrided and non-nitrided conditions were similar.

206

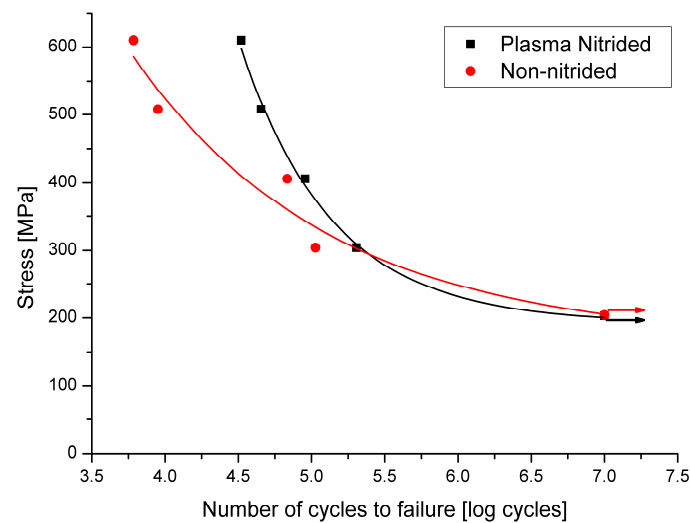


Figure 4. Graphic of stress versus number of cycles, obtained from the fatigue tests on non-nitrided and nitrided Ti-6Al-4V alloy. Arrows indicate samples that did not fail.

Increased fatigue life of the plasma nitrided specimens in tests at higher stresses can be attributed to compressive residual stress in the nitride layers and in the nitrogen diffusion zone, inhibiting thereby crack nucleation at the alloy surface. This is in agreement with another study by Rodriguez et al [10]. According to Farokhzadeh et al [1], the nitride layer reduces the extent of brittle failure on the specimen surface while the diffusion zone provides mechanical support.

As per the study of Morita et al [18], the formation of these layers after plasma nitriding increases the surface hardness of the alloy, which in turn increases the resistance to movement of dislocations and as a consequence, increases the fatigue strength of the alloy. Rocha [19], reported that delay in crack nucleation in plasma nitrided specimens is due to the difference in Young modulus between the titanium alloy matrix (100 GPa) and the titanium nitrides formed on the plasma nitride surface (400 GPa). When high stresses are applied to the nitride layer, it does not resist it being fragile and causes a crack to nucleate and grow in the nitride layer. At lower applied stresses, the nitride layer has no significant effect on improving fatigue behavior. This seems to be related to an increase in surface roughness during plasma nitriding and this plays a more important role than nitriding itself on the fatigue life of Ti-6Al-4V alloy specimens. The deleterious effect of the increase in surface roughness on the mechanical behavior of the plasma nitride Ti-6Al-4V alloy has been also reported by other authors [1,20–22].

To observe the fracture surface of fatigue tested specimens, three loads were selected: 304, 406 and 610 MPa. At each selected load, the fracture surface of two specimens in the non-nitrided and nitrided conditions were observed. Figure 5 shows the general features on the fracture surfaces of the specimens. It can be seen that at low magnifications, the fracture surfaces of the nitrided specimens, presented in figures 5(b), (d), and (f) are quite different from those of the non-nitrided specimens, presented in figures 5(a), (c) and (e).

The non-nitrided specimens reveal a ductile type fracture. The surface in relief is characteristic of plastic deformation prior to fracture. The fracture surfaces of nitrided specimens that were fatigue tested reveal a large region of planar propagation, followed by a relatively small region corresponding to final failure. This has also been reported by other authors [1,10]. On this surface, it is difficult to determine the region corresponding to the initial stages of the crack. Similar aspects about fracture surface features of nitrided specimens that were fatigue tested were reported by other authors [1,7]. One feature to highlight about the fracture surfaces of nitrided specimens that were fatigue tested is the number of points at which cracks initiated. When low stresses are applied, a single crack initiation point is observed, as presented in figure 5(b), whereas at high stresses, there are many crack initiation points, characterized by ratchet marks from the nucleated cracks, as

presented in figure 5(f). The ratchet marks are indicative of multiple crack fronts that rapidly progress from the surface into the bulk of the specimen, leading to its premature failure. These observations are in agreement with those made by Cassar et al. [22].

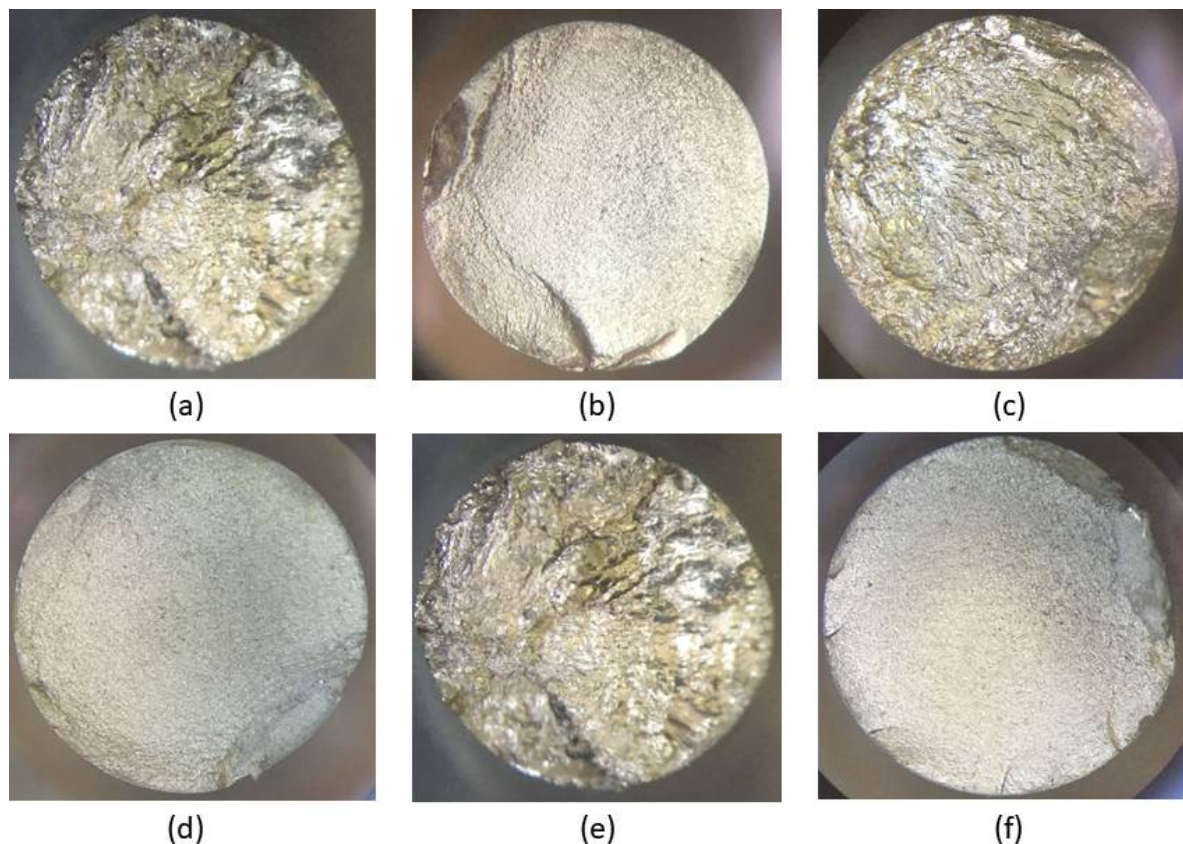


Figure 5. Fracture surfaces of specimens after the tensile test. These images were obtained using a stereoscopic microscope. Conditions: (a) non-nitrided tested at 304 MPa and after 123700 cycles to failure, (b) nitrided tested at 304 MPa and after 233000 cycles to failure, (c) non-nitrided tested at 406 MPa and after 68700 cycles to failure, (d) nitrided tested at 406 MPa and after 90800 cycles to failure, (e) non-nitrided tested at 610 MPa and after 6700 cycles to failure, (f) nitrided tested at 610 MPa and after 35000 cycles to failure.

Details of the fracture surfaces of the nitrided specimens that were fatigue tested are shown in figure 6. No significant differences in the fracture surfaces were observed of the specimens fatigue tested at different stress amplitudes. Figure 6(a) shows a planar region where the crack originated. On this fracture surface, sub-cracks perpendicular to the fracture surface can be also seen. Overall, extensive plastic deformation can be observed throughout the fracture surface, without evidence of brittle fracture.

Over the whole fracture surface, microcracks and striations perpendicular to the propagation direction can be seen in detail in figures 6(b) and (c) respectively. Multiple cracks were also reported in other studies [1,18,23]. A large number of striations on the fracture surface indicate plastic deformation. At various regions on this fracture surface, characteristic lamellar microstructure consisting of α and β phases can be also clearly observed in figure 6(d). Planar facets, which have the same size and morphology as the lamellas or colony of lamellas, and typical of lamellar microstructures (Widmanstätten type) can be also observed. Similar observations were also reported in other studies [1,23]. Microcracks seem to occur at the interfaces of the α and β phases of the lamellar microstructure [7]. The fractograph in figure 7 shows the formation of fracture cracks at the lamella interfaces.

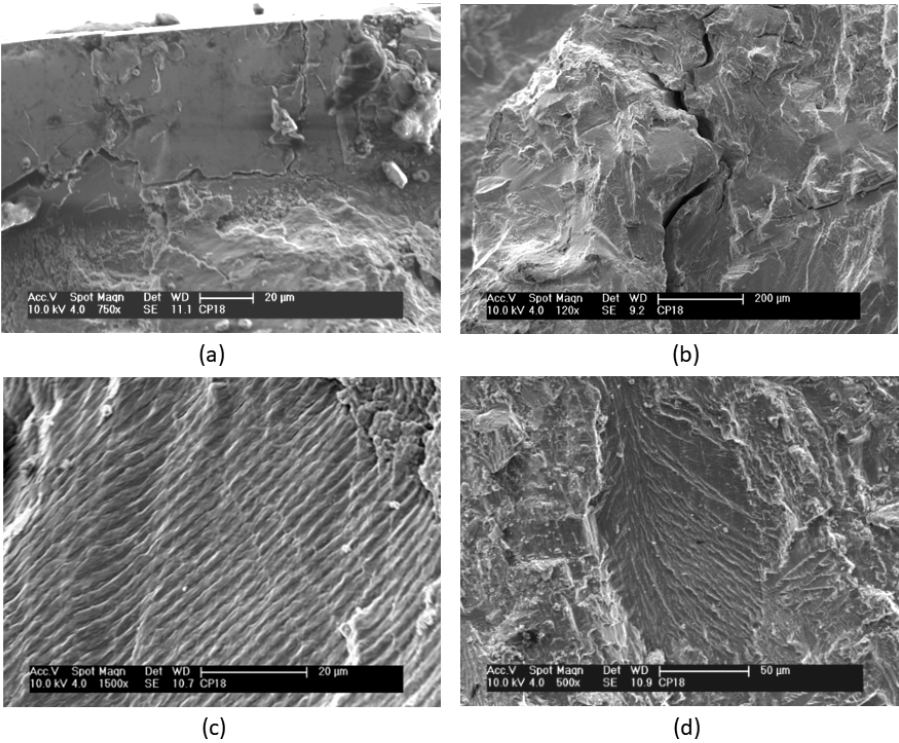


Figure 6. Scanning electron micrographs of the fracture surfaces of nitrided specimens after fatigue tests at 304 MPa and 233000 cycles to failure.

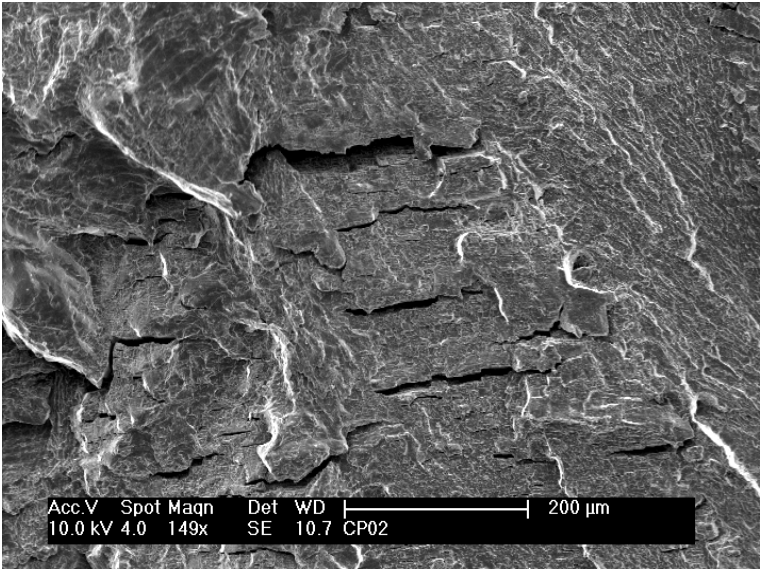


Figure 7. Scanning electron micrograph of fracture surface of non-nitrided specimen after fatigue test at 610 MPa and 6700 cycles to failure.

Details of the fracture surface of nitrided specimens that were fatigue tested are shown in figures 8 to 11. Figure 8 shows a detail of the nitride layer region after fatigue testing at 610 MPa and after 35000 cycles to failure. A region at the border of the nitrided specimen that was fatigue tested shows the same features. The nitride layers cannot be observed, but only the nitrogen diffusion layer. It can be noted that the thickness of this layer is irregular throughout the surface of the specimen. The presence of striations along the whole layer can be also observed. Striations in the nitride layer were also observed by Farokhzadeh et al [1].

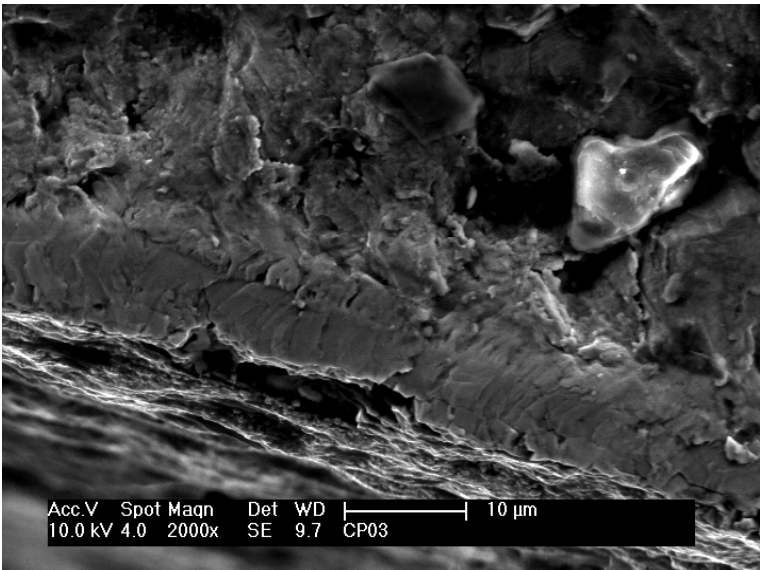


Figure 8. Scanning electron micrograph of the fracture surface of plasma nitrided specimen that was fatigue tested at 610 MPa and 233000 cycles to failure.

Figure 9 shows a region close to an initiated crack on the fracture surface of a nitrided specimen that was fatigue tested at 610 MPa and after 35000 cycles to failure. These observations are similar to those observed in nitrided specimens that were fatigue tested at other stress cycles. In this region, planar facets and microstructural characteristics of the same size and morphology of a lamella or a colony of lamellas can be observed, similar to those observed on fractured untreated specimens. As reported in other studies [7,24], fatigue crack initiation and propagation in lamellar materials depends on plastic anisotropy of colonies and cleavage fracture. Shear processes parallel to lamellar interfaces is relatively easier than across the lamella. Thus, easy propagation of cracks parallel to lamellar interfaces results in facets on the fracture surface. In contrast, it is possible to observe in figure 10 on the fracture surface of another specimen (406 MPa and after 90800 cycles to failure) layers of fractured lamellas caused by microcracks at the α/β interfaces.

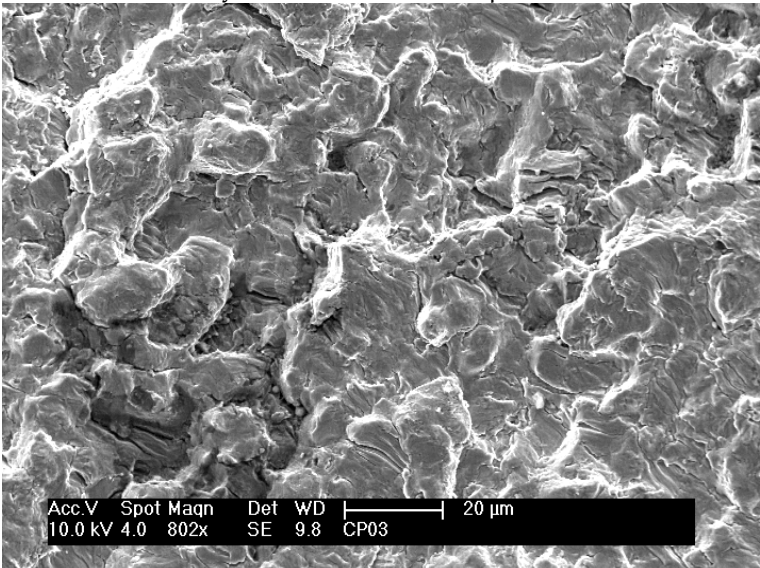


Figure 9. Scanning electron micrograph of the fracture surface of plasma nitrided specimen that was fatigue tested at 610 MPa and 233000 cycles to failure.

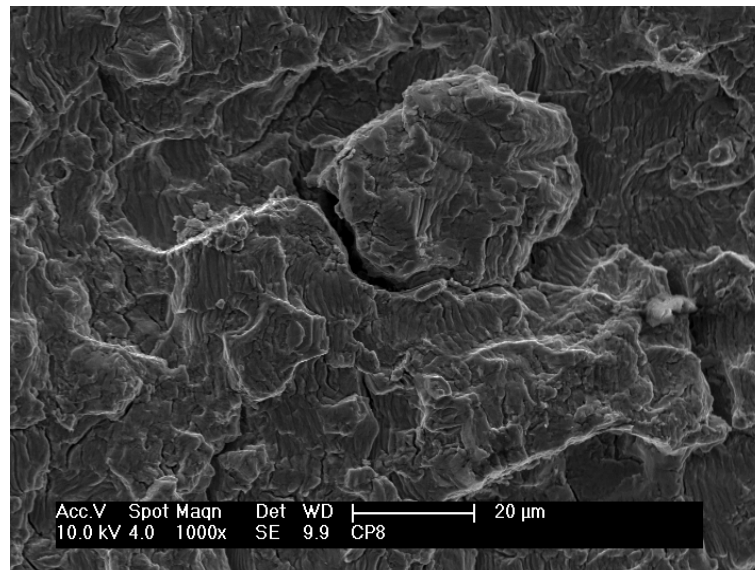


Figure 10. Scanning electron micrograph of the fracture surface of plasma nitrided specimen that was fatigue tested at 406 MPa and 90800 cycles to failure.

Zuo et al [7] also observed that microcracks occurred more frequently at the α/β interfaces. According to Zuo et al [7], in materials with two phases in its microstructure (α and β), the crack nucleation region depends not only on microstructural aspects but also on the response of each phase to the stress applied during the test. When stress is applied to the alloy, the response to this stress differs depending on the phase. The β phase being more ductile than the alpha phase permits dislocation sliding to occur. Dislocation sliding continues until it reaches the α/β interface. At this interface, sliding ceases and stress accumulates at this point. Since the alpha phase is less ductile, the accumulated stress causes cracks to nucleate. As a result, a number of α/β interfaces become spots for crack initiation.

The final rupture region on the fracture surface of a nitrided specimen that was fatigue tested at 406 MPa and after 90800 cycles to failure is shown in figure 11. In figure 11 (a), note the microcavities (dimples) all over the surface, characteristic of a final rupture region caused by mechanical overload. Figure 11 (b) shows figure 11 (a) at a higher magnification and this reveals in detail the size and morphology of the microcavities (dimples). The microcavities (dimples) are of varying sizes and predominantly large and shallow, typical of shearing. (shear dimples). Throughout the final rupture region, no oval microcavities, typical of tearing (tear dimples) were observed.

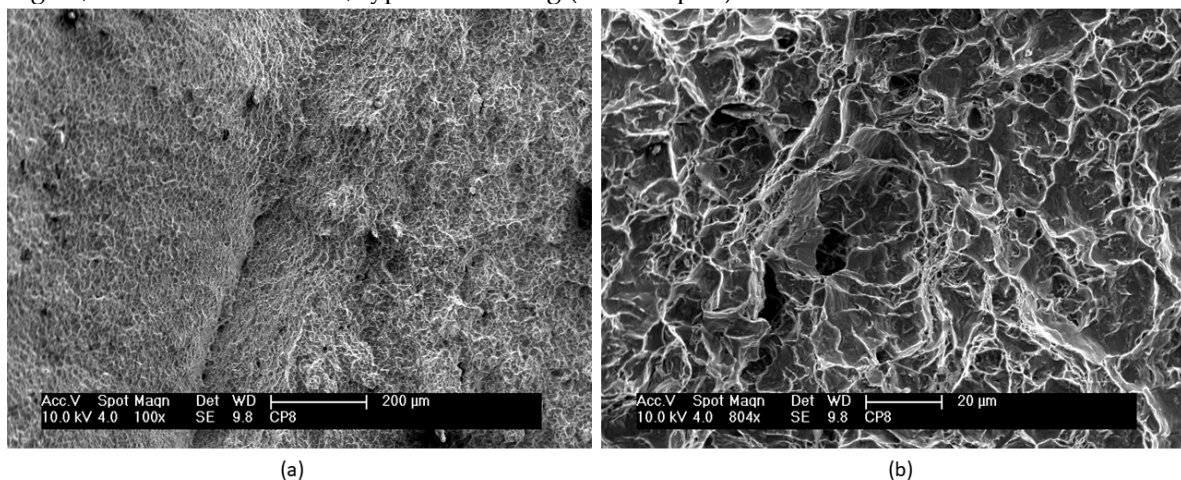


Figure 11. Scanning electron micrographs of the final rupture region on the fracture surface of plasma nitrided specimen that was fatigue tested at 610 MPa and 90800 cycles to failure.

4. Conclusions

This study about the effect of plasma nitriding on the fatigue behavior of Ti-6Al-4V alloy enabled us to make the following conclusions:

- Thermochemical treatment of plasma nitriding resulted in the formation of two nitride layers, δ -TiN with a face-centered cubic structure and ϵ -Ti₂N with a tetragonal structure. Below these layers, a region where nitrogen had diffused in the alloy was encountered. The thicknesses of the nitride layer and the nitrogen diffusion layer, as measured by scanning electron microscopy were $3.77 \pm 1.46 \mu\text{m}$ and $10.37 \pm 2.58 \mu\text{m}$, respectively.
- The plasma nitrided specimens had higher low cycle fatigue strength, while at high cycles, the nitrided and non-nitrided specimens exhibited similar behavior. There was a significant increase in surface roughness of the alloy caused by the plasma nitriding process. This increase in roughness seems to cancel the positive effect of nitriding on fatigue properties at high cycles.
- In the untreated specimens that were fatigue tested, a fracture surface with raised regions, characteristic of plastic deformation prior to fracture was observed. The fracture surfaces of the nitrided specimens revealed large regions with planar propagation, followed by a relatively smaller region corresponding to final rupture.
- At various regions on the fracture surfaces of specimens that were fatigue tested, lamellar microstructure was clearly observed. The fracture mechanism seems to be cracking at interfaces of the α and β phases in the lamellar microstructure.
- The fracture surface at the edges of nitrided specimens that were fatigue tested revealed a diffusion layer with varying thickness and the presence of striations throughout the whole layer. The final fracture region showed rupture characteristic of mechanical overload and with a large number of shear dimples.

Author Contributions: Conceptualization: M.C.B.C., A.A.C. and N.B.L.; Validation: G.F.C.A., A.A.C., M.M., A.S.S., and N.B.L.; Formal Analysis: M.C.B.C., M.C., G.L.X. and R.R.O.; Investigation: M.C.B.C., A.A.C., M.M., A.S.S., and N.B.L.; Writing-Review & Editing: G.F.C.A. and A.A.C.; Supervision: A.A.C. and N.B.L.

Funding: This research was funded by CAPES (Brazilian Coordination for the Improvement of Higher Education Personnel) – PROEX 01-2018.

Acknowledgments: The authors are grateful to research support CAPES (Brazilian Coordination for the Improvement of Higher Education Personnel) for the scholarship given to M.C.B.C.

Conflicts of Interest: The authors declare no conflict of interest.

References

- Farokhzadeh, K.; Edrisy, A. Fatigue improvement in low temperature plasma nitrided Ti-6Al-4V alloy. *Mater. Sci. Eng. A* **2015**, *620*, 435–444.
- Yetim, A.F.; Yildiz, F.; Vangolu, Y.; Alsaran, A.; Celik, A. Several plasma diffusion processes for improving wear properties of Ti6Al4V alloy. *Wear* **2009**, *267*, 2179–2185.
- Yildiz, F.; Yetim, A.F.; Alsaran, A.; Çelik, A. Plasma nitriding behavior of Ti6Al4V orthopedic alloy. *Surf. Coatings Technol.* **2008**, *202*, 2471–2476.
- Carrion, P.E.; Shamsaei, N.; Daniewicz, S.R.; Moser, R.D. Fatigue behavior of Ti-6Al-4V ELI including mean stress effects. *Int. J. Fatigue* **2017**, *99*, 87–100.
- Ali, M.M.; Raman, S.G.S. Effect of Plasma Nitriding Environment and Time on Plain Fatigue and Fretting Fatigue Behavior of Ti-6Al-4V. *Tribol. Lett.* **2010**, *38*, 291–299.
- Dowling, N.E. *Mechanical behavior of materials: engineering methods for deformation, fracture, and fatigue*; 3rd Editio.; Pearson, 2007; ISBN 9780131863125.
- Zuo, J.H.; Wang, Z.G.; Han, E.H. Effect of microstructure on ultra-high cycle fatigue behavior of Ti-6Al-4V. *Mater. Sci. Eng. A* **2008**, *473*, 147–152.
- Zhecheva, A.; Sha, W.; Malinov, S.; Long, A. Enhancing the microstructure and properties of titanium

- alloys through nitriding and other surface engineering methods. *Surf. Coatings Technol.* **2005**, *200*, 2192–2207.
9. Farè, S.; Lecis, N.; Vedani, M.; Silipigni, A.; Favoino, P. Properties of nitrided layers formed during plasma nitriding of commercially pure Ti and Ti-6Al-4V alloy. *Surf. Coatings Technol.* **2012**, *206*, 2287–2292.
 10. Rodriguez, D.; Manero, J.M.; Gil, F.J.; Planell, J.A. Low cycle fatigue behavior of Ti6Al4V thermochemically nitrided for its use in hip prostheses. *J. Mater. Sci. ...* **2001**, *2*, 935–937.
 11. Callister, W.D.; Rethwisch, D.G. *Fundamentals of Materials Science and Engineering: An Integrated Approach*; edition.; Hoboken, N.J.: Wiley, 2012; ISBN 1118061608.
 12. Rahman, M.; Reid, I.; Duggan, P.; Dowling, D.P.; Hughes, G.; Hashmi, M.S.J. Structural and tribological properties of the plasma nitrided Ti-alloy biomaterials: Influence of the treatment temperature. *Surf. Coatings Technol.* **2007**, *201*, 4865–4872.
 13. American Society for Testing and Materials (ASTM) ASTM F136 - 13 Standard Specification for Wrought Titanium-6Aluminum-4Vanadium ELI (Extra Low Interstitial) Alloy for Surgical Implant Applications (UNS R56401) 2013.
 14. American Society for Testing and Materials (ASTM) ASTM E8 / E8M - 11 Standard Test Methods for Tension Testing of Metallic Materials 2011, 28.
 15. International Organization for Standardization ISO 4287:1997 - Geometrical Product Specifications (GPS) - Surface texture: Profile method - Terms, definitions and surface texture parameters 1997, 25.
 16. Zimmer, C.G. Influência da oxidação térmica sobre as propriedades de fadiga da liga Ti-6Al-4V, Universidade Federal do Rio Grande do Sul, 2011.
 17. Almeida, G.F.C.; Couto, A.A.; Reis, D.A.P.; Massi, M.; da Silva Sobrinho, A.; de Lima, N.B. Effect of Plasma Nitriding on the Creep and Tensile Properties of the Ti-6Al-4V Alloy. *Metals (Basel)*. **2018**, *8*, 618.
 18. Morita, T.; Tanaka, S.; Ninomiya, S. Improvement in fatigue strength of notched Ti-6Al-4V alloy by short-time heat treatment. *Mater. Sci. Eng. A* **2016**, *669*, 127–133.
 19. Rocha, P.H.C. Estudo Comparativo de Vida em Fadiga de Cabos Condutores Utilizando o Critério H/w, Universidade de Brasília, 2016.
 20. Cassar, G.; Avelar-Batista Wilson, J.C.; Banfield, S.; Housden, J.; Fenech, M.; Matthews, A.; Leyland, A. Evaluating the effects of plasma diffusion processing and duplex diffusion/PVD-coating on the fatigue performance of Ti-6Al-4V alloy. *Int. J. Fatigue* **2011**.
 21. Novovic, D.; Dewes, R.C.; Aspinwall, D.K.; Voice, W.; Bowen, P. The effect of machined topography and integrity on fatigue life. *Int. J. Mach. Tools Manuf.* **2004**, *44*, 125–134.
 22. Cassar, G.; Avelar-Batista Wilson, J.C.; Banfield, S.; Housden, J.; Matthews, A.; Leyland, A. Surface modification of Ti-6Al-4V alloys using triode plasma oxidation treatments. *Surf. Coatings Technol.* **2012**, *206*, 4553–4561.
 23. ASM International v.12 Fractography. In *ASM Handbook*; ASM International: Ohio, 1987; p. 857 ISBN 9780871700186.
 24. Lindemann, J.; Buque, C.; Appel, F. Effect of shot peening on fatigue performance of a lamellar titanium aluminide alloy. *Acta Mater.* **2006**, *54*, 1155–1164.